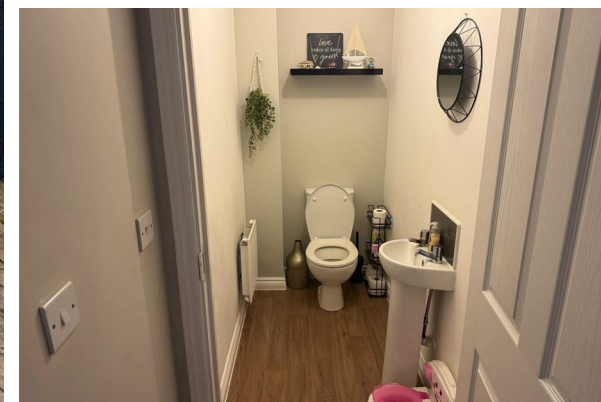




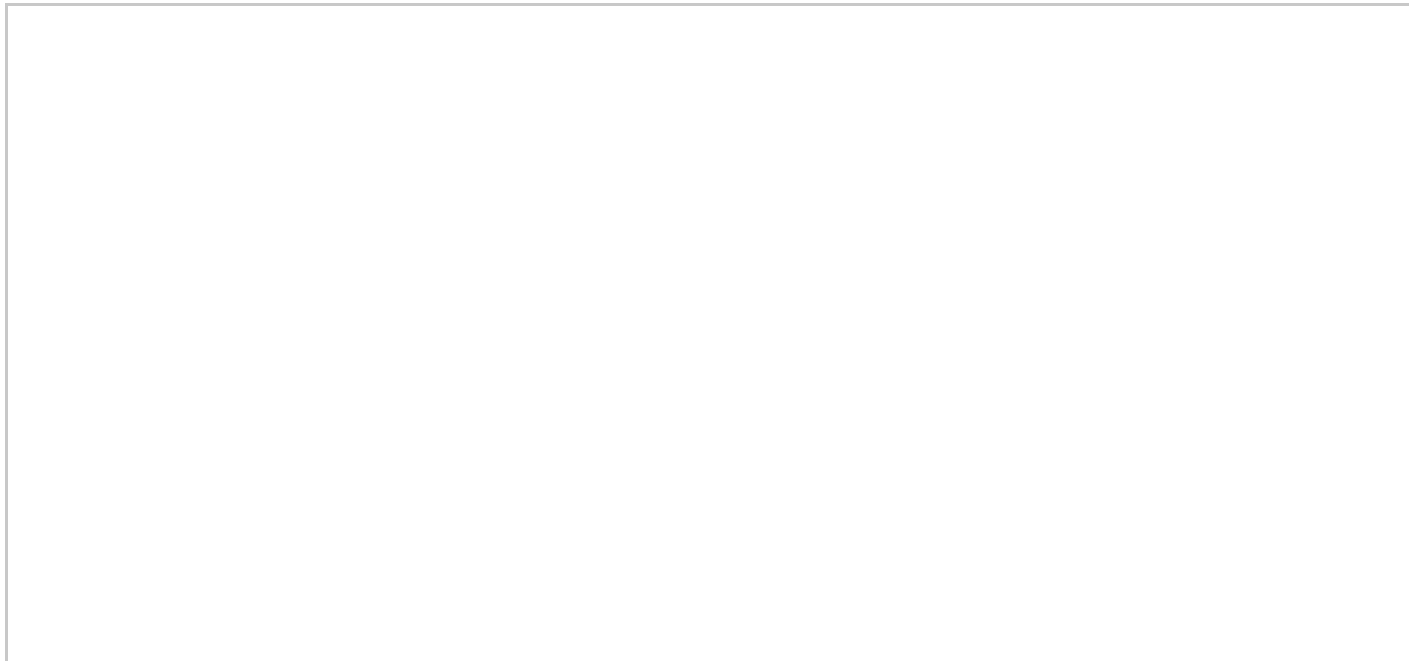
TO LET

14 Spinning Close, Darlington, DL1 1PQ

£950 Per Calendar Month



- Available 18/03/2026
- 3 bedrooms
- Family bathroom and en-suite
- Kitchen-diner
- Semi-detached
- Private garden
- Unfurnished
- Deposit: £1096
- Holding deposit: £218



Directions

THE PROPERTY

Available from 18/03/2026

This semi-detached house offers a perfect blend of comfort and modern living. With three bedrooms, this property is ideal for families seeking a spacious and inviting home. The layout includes a welcoming reception room, providing a lovely space for relaxation and entertaining guests.

The house boasts two bathrooms, including a family bathroom and an en-suite, ensuring convenience for all. One of the standout features of this property is the private garden, which offers a serene outdoor space for children to play, gardening enthusiasts to indulge their passion, or simply for enjoying a quiet afternoon in the sun.

This semi-detached home will be available from March 2026, presenting an excellent opportunity for those looking to secure a future residence in a desirable location.

SITUATION